



METCHRO

MARKET-DRIVEN STAINLESS TRUCK PARTS



BUMPERS
AND ACCESSORIES

WHAT'S INSIDE...

METCHRO POLICIES

METCHRO POLICIES OVERVIEW	4
METCHRO LEGEND & LIGHTS	7
BUMPERS PROFILES AND OPTIONS REFERENCE CHART	8-9

PETERBILT BUMPERS

PETERBILT 389 2012 & UP / 567 SFA 2016 & UP	11-13
PETERBILT 348 ALL YEARS	13

KENWORTH BUMPERS

KENWORTH W990 2019 & UP	15-17
KENWORTH W990L 1982 & UP	19
KENWORTH W990B 1982 & UP	19
KENWORTH T800 / T880	21

FREIGHTLINER BUMPERS

FREIGHTLINER CLASSIC 2007 & UP	23
--------------------------------------	----

WESTERN STAR BUMPERS

WESTERN STAR 49X 2021 & UP	23
----------------------------------	----

VOLVO BUMPERS

VOLVO VNL2000 1998-2003	23
-------------------------------	----

UNIVERSAL BUMPERS

UNIVERSAL BUMPERS	24-27
-------------------------	-------

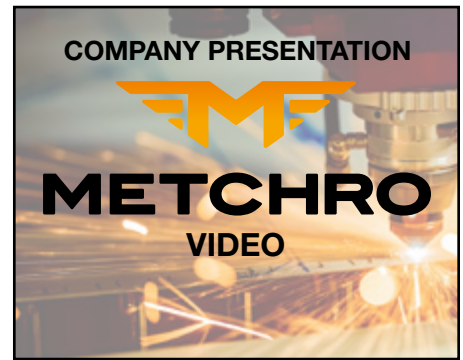
BUMPER ACCESSORIES

UNIVERSAL LED LIGHTS KITS	28
BRACKETS AND HARDWARE	29
WIRE PROTECTIVE COVERS	29
UNIVERSAL FIXATION PLATES	29



METCHRO POLICIES OVERVIEW

Please Review Carefully



OUR ACCESSORIES ARE MADE OF PREMIUM QUALITY STAINLESS STEEL (304 GRADE MIRROR FINISH) OR STANDARD QUALITY STAINLESS STEEL (430 GRADE).

OUR FENDERS ARE MADE OF 430 GRADE STAINLESS STEEL USING STAMPING OR ROLL FORMING PROCESS FOR THE BEST PERFORMANCE IN THE INDUSTRY.

OTHER MATERIALS MAY BE USED (STAINLESS STEEL, CHECKER PLATES, ALUMINIUM AND GALVANIZED STEEL). ASK METCHRO CUSTOMER SERVICES FOR MORE OPTIONS.

ACCOUNTS AND PAYMENTS

- Minimum order is \$250.
- Approved accounts will be assigned payment terms of NET 30 days by check, ACH (Automated Clearing House) or wire transfer.
- A service charge of 1.5% per month will be imposed on invoices not paid within 30 days.
- Orders without approved account must be paid in advance by VISA, MasterCard or AMEX.
- A \$75 NSF (Non-Sufficient Fund) fee will be charged on each incidence a check is returned to METCHRO.
- New Customers must complete the New Customer Info/Credit Form and follow the METCHRO Qualification Instructions to open an account.

ORDERING GUIDELINES

- METCHRO is a Truck Parts Manufacturer. All parts need to be produced and packed before being in transit to our customer facility. Depending on our inventory and/or METCHRO fabrication schedule the fabrication process may take up 3 to 5 weeks. Any anticipated delay will be noted on the Confirmation Order.
- Orders may be placed by e-mail at client@metchro.com or phone Customer Services at 1-888-932-3333 extension 230.
- Additions, Deletion or Cancellation of items or orders must be submitted via email with 24 hours of the order date.
- Lead time to process orders is 1-2 business days from the receipt of the purchase order. Large orders or orders with custom parts may require up to 5 business days.
- METCHRO will acknowledge receipt of orders by email and/or a phone call within 2 business days of receipt. If confirmation is not received, please contact METCHRO to ensure your order is confirmed.
- All claims for shortage must be made within 5 days of receiving the products.

- All applicable taxes and charges are in addition to price list.
- METCHRO will work to resolve delays with the freight company, however, delays do arise from time to time due to weather and unforeseen circumstances beyond METCHRO's control.

CANCELING ORDERS & RETURNING POLICIES

- Cancellation must be submitted via email within 24 hours of the order date.
- If order has already been shipped, it is the customer's responsibility to return the order at the customer's own expense.
- All products returned for credit will be subject to a 15% restocking charge.
- All products must be returned by prepaid freight.
- All products must be returned in its original package and in a resale condition.

**IMAGINING
WORKING
SHINING**

WARRANTY

- All returns and warranty claims must be done with Metchro consent and must have an authorization number.
- Defective parts must be accompanied with a filled-out claim form, the sales invoice and 4 pictures:
 - ▶ Picture of the entire truck
 - ▶ Picture to see the installation hardware
 - ▶ Picture of the problem
 - ▶ Picture proving that the rubber padding was properly installed (Fenders only)

METCHRO

ACCESSORIES WARRANTY

- All stainless-steel products carry a limited one-year warranty from invoice date against defects in material or workmanship.
- All LED Lightings products carry a three-year-warranty (3) from invoice date against defects in material or workmanship.
- Warranty does not cover any labor cost or damages due to accidents, abuse, mishandling of parts, improper storage, improper installation, or misuse.
- Parts with multiple components, only the defective component will be replaced.
- This warranty is applicable only to the original purchaser.
- METCHRO is not and will not be held responsible for any damage or violations that may occur to the vehicle on which a Metchro part is installed. This includes, but not limited to, paint damage, body damage and law infractions. It is solely the responsibility of the client to ensure that the part conforms to the vehicle's specifications and other laws to which the vehicle must abide.

FENDER

AND MOUNTING KIT WARRANTY

- One (1) year warranty on parts apply.
- METCHRO will replace defective parts and will incur responsibility for shipping the replacements parts.
- Warranty will only be granted if the fender is properly installed using the Metchro Mounting kit.
- Warranty does not cover damages due to accidents, abuse, mishandling of the parts, improper storage, improper installation, or misuse.
- Metchro is not and will not be held responsible for any damage or violations that may occur to the vehicle on which a Metchro part is installed. This includes, but not limited to, paint damage and law infractions. It is solely the responsibility of the client to ensure that the part conforms to the vehicle's specifications and other laws to which the vehicle must abide.
- This warranty is applicable only to the original purchaser.

CLAIMS (GENERAL TERMS)

- All claims (Shortage, Mis-shipment, Damage, Overage, Customer Error and Billing Error) must be submitted to METCHRO within 5 business days of the receipt of shipment. Claims submitted beyond 5 business days of the receipt of shipment will be voided by METCHRO.
- For all shipments received, the person who signs and receives the shipment at the Customer location is responsible for noting on the Bill of Lading, whether any boxes arrived damaged or shorted. Failure to do so will void all claim rights between all parties.

- METCHRO will have no recourse against the Freight Company if customer does not note any damages or shortages on the Bill of Lading.
- The customer's receiving department must count and sign for the exact number of boxes received. Failure to follow the above instructions will void all claim rights between all parties.

DISCLAIMER

- METCHRO reserves the right to amend or update our Policies & Procedures without notice.
- METCHRO is not responsible for typographical, product information or print errors. Specifications in this catalog may be changed without notice. Products may look different from those in the photos in this catalog due to printing quality.

FENDER AND MOUNTING KITS

- Mounting hardware
- Quarter fenders
- Tandem (half) fenders
- Full fenders
- Ronde fenders

FRAME AND FAIRING ACCESSORIES

- Air line box
- Center back panel
- Mud flap hanger
- Rear frame cover
- Step cover
- 5th wheel ramp

SLEEPER ACCESSORIES

- Cab panel
- Baggage door trim
- Handle trim
- Sleeper panel
- Sleeper extension panel
- Window trim
- 5th wheel ramp

CAB ACCESSORIES

- Dual Lights panel
- Air cleaner bar
- Cowl panel
- Mirror Lights bar
- Sun visor & visor trim
- Window Deflector

HOOD AND GRILL ACCESSORIES

- Air intake Lights, fairing & trim
- Bug deflector & shield
- Fender trim & guard
- Front grill
- Hood panel
- Logo panel
- Side deflector

BUMPER ACCESSORIES

- Bumper Lights bar
- Licence plate holder
- Foot panel
- Bumper insert

DO IT YOURSELF KIT



Metchro's 7000 Series System

EACH DIGIT GIVES IMPORTANT INFORMATION ABOUT THE PARTS (ACCESSORIES ONLY)

S7111003XXX



- 1** The **S** prefix means that the product is made with a highly polished stainless steel (304-X10) mirror finish.
 With the **V** prefix brushed finish
 With the **C** prefix, stainless steel (430BA)

- 2** This digit refers to the accessories of the 7000 series

- 3** This digit represents a custom truck accessory

This digit represents the make of the truck:

- | | | |
|-------------------|---------------|-----------|
| 0 = Caterpillar | 6 = Mack | U = Isuzu |
| 1 = Peterbilt | 7 = Volvo | |
| 2 = Kenworth | 8 = Sterling | |
| 3 = Freightliner | 9 = Universal | |
| 4 = International | H = Hino | |
| 5 = Western Star | F = Ford | |

- 4** This represents the location on the truck where the part is mounted:

- | | |
|-------------------------------|---------------------------|
| 1 = Bumper accessories | 7 = Frame accessories |
| 2 = Hood & grill accessories | 8 = Trailer accessories |
| 3 = Cab (outside) accessories | 9 = Wheel accessories |
| 4 = Cab (inside) accessories | K = Multiple location kit |
| 5 = Sleeper accessories | |
| 6 = Side fairing accessories | |

- 5** This digit represents how the part is sold:

- 1 = As a single unit (UN)
- 2 = As a pair (PR)
- 3 = As a kit (KIT)

- 6** These 3 digits identify the part itself

- 7** Suffix represents the type of Lightsing that will be used on the product

- | | | |
|--------|---|-------------------------------------|
| LED | = | LED no bezel |
| LEDB | = | LED with bezel |
| LEDCA | = | Clair lens with Ambre LED |
| LEDCAB | = | Clair lens with Ambre LED and bezel |
| LEDCR | = | Clair lens with red LED |
| LEDCRB | = | Clair lens with red LED and bezel |

3/4 BULLSEYE LIGHTS LEGEND



LED



LEDC



WITHOUT LIGHT
PARTS # only



AMBER LIGHT
PARTS # + LED



CLEAR AMBER LIGHT
PARTS # + LEDC

2 ROUND LIGHTS LEGEND



LED



LEDB



LEDCB



WITHOUT LIGHT
PARTS # ONLY



AMBER LIGHT
PARTS # + LED



AMBER LIGHT+BEZEL
PARTS # + LEDB



CLEAR AMBER LIGHT
PARTS # + LEDCB

OVAL / FLATLINE LIGHTS LEGEND



LED



LEDC



LEDF



LEDFC



WITHOUT LIGHT
PARTS # ONLY



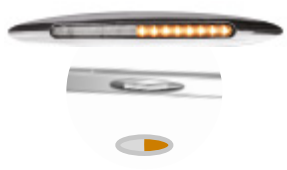
AMBER LIGHT
PARTS # + LED



CLEAR AMBER LIGHT
PARTS # + LEDC

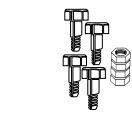


AMBER LIGHT
PARTS # + LEDF

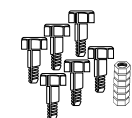


CLEAR AMBER LIGHT
PARTS # + LEDFC

BOLTS UNIVERSAL KITS LEGEND



7913001
UNIVERSAL STAINLESS
STEEL BOLTS KIT FOR
BUMPER (4X)



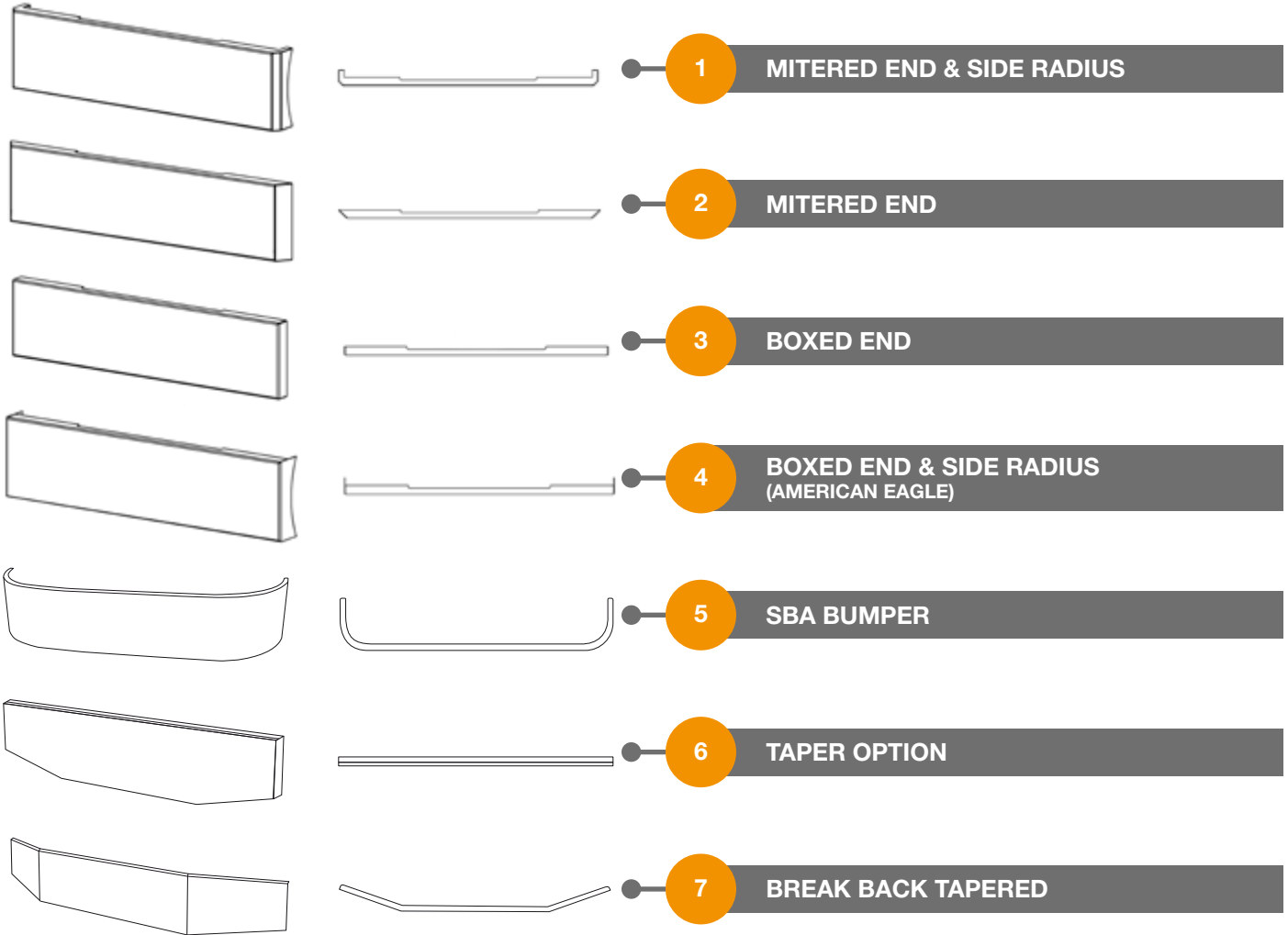
7913002
UNIVERSAL STAINLESS
STEEL BOLTS KIT FOR
BUMPER (6X)



7913003
UNIVERSAL STAINLESS
STEEL BOLTS KIT FOR
BUMPER (8X)

BUMPERS PROFILES AND OPTIONS REFERENCE CHART

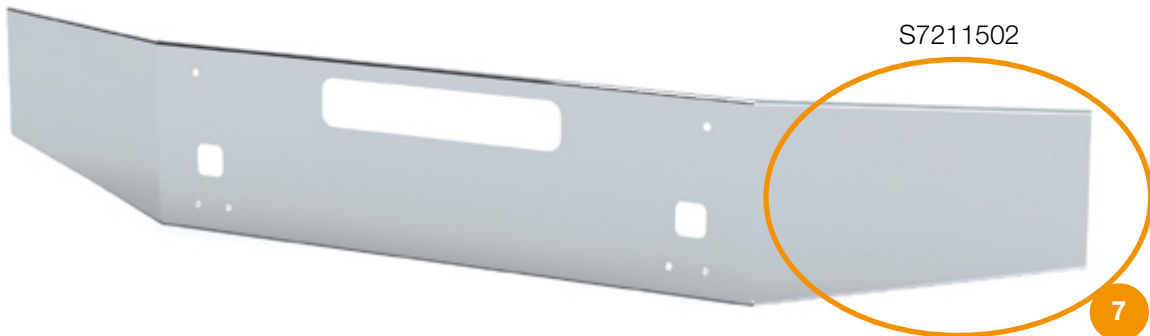
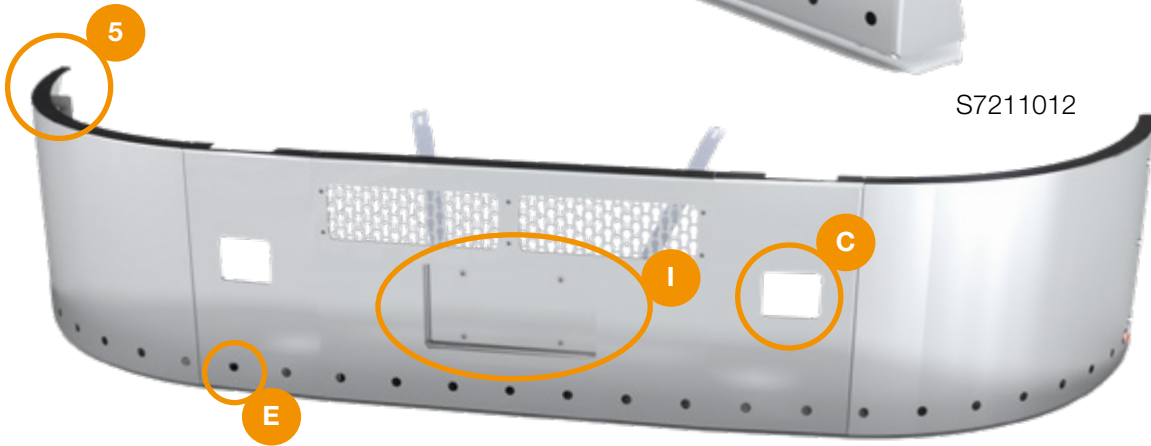
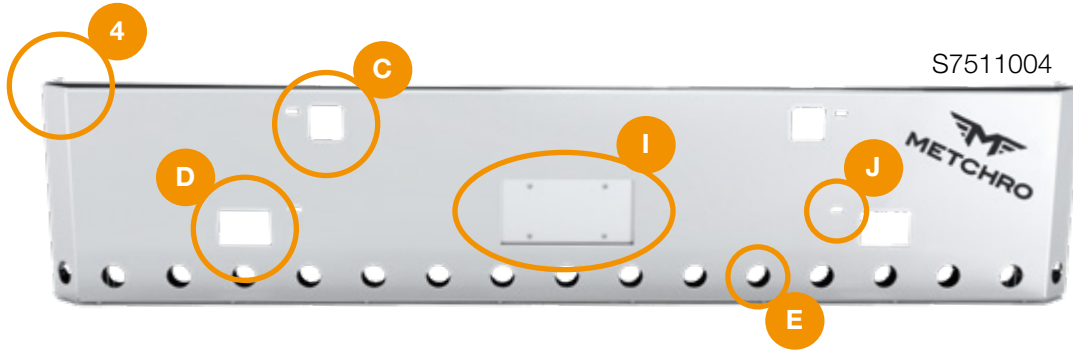
PROFILES



OPTIONS

A	BLANK	F	TAPER
B	BOLTLESS	G	BOXED ENDS
C	TOW HOOK HOLES	H	OPENED ENDS
D	FOG LIGHTSS HOLES	I	RECESSED LICENCE PLATE
E	LED LIGHTSS HOLES	J	VISIBLE

EXAMPLES

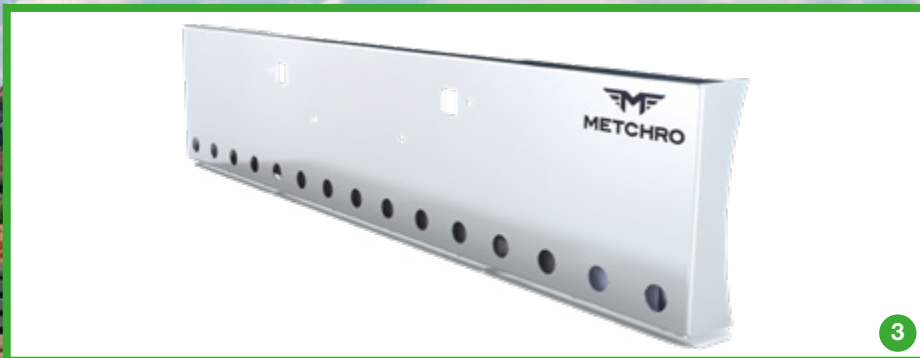


PETERBILT BUMPERS



FRONT BUMPERS									
	PART #	MODEL	DIMENSIONS	BOLT PATTERN HOLES	TOW HOOK HOLES	LED	TYPE	SFA/SBA	OTHER
	S7111070	389 / 567	18" x 94"	Visible	DOUBLE Tow Hook	24 x 3/4"	Mitered 4" & Taper Ends (16")	SFA	n.a.
	S7111069	389 / 567	20" x 94"	NOT Visible	DOUBLE Tow Hook	Blank	Mitered 4" Boxed radius	SFA	n.a.
1	S7111030	389 / 567	20" x 94"	Visible	DOUBLE Tow Hook	24 x 3/4"	Mitered 2" Boxed radius	SFA	n.a.
	S7111031	389 / 567	20" x 94"	Visible	DOUBLE Tow Hook	Blank	Mitered 2" Boxed radius	SFA	n.a.
	S7111032	389 / 567	20" x 94"	Visible	DOUBLE Tow Hook	15 x 2" Round	Mitered 2" Boxed radius	SFA	n.a.
	S7111033	389 / 567	20" x 94"	Visible	DOUBLE Tow Hook	10 x Oval	Mitered 2" Boxed radius	SFA	n.a.
	S7111034	389 / 567	18" x 94"	Visible	DOUBLE Tow Hook	24 x 3/4"	Mitered 2" Boxed radius	SFA	n.a.
	S7111035	389 / 567	18" x 94"	Visible	DOUBLE Tow Hook	Blank	Mitered 2" Boxed radius	SFA	n.a.
	S7111036	389 / 567	18" x 94"	Visible	DOUBLE Tow Hook	15 x 2" Round	Mitered 2" Boxed radius	SFA	n.a.
	S7111037	389 / 567	18" x 94"	Visible	DOUBLE Tow Hook	10 x Oval	Mitered 2" Boxed radius	SFA	n.a.
	S7111062	389 / 567	20" x 94"	Visible	NO Tow Hook	24 x 3/4"	Mitered 2" & radius	SFA	n.a.
	S7111063	389 / 567	20" x 94"	Visible	NO Tow Hook	Blank	Mitered 2" & radius	SFA	n.a.
	S7111072	389 / 567	20" x 94"	NOT Visible	DOUBLE Tow Hook	Blank	Mitered 4"	SFA	n.a.
	S7111038	389 / 567	20" x 94"	Visible	DOUBLE Tow Hook	24 x 3/4"	Mitered 2"	SFA	n.a.
	S7111039	389 / 567	20" x 94"	Visible	DOUBLE Tow Hook	15 x 2" Round	Mitered 2"	SFA	n.a.
	S7111040	389 / 567	20" x 94"	Visible	DOUBLE Tow Hook	10 x Oval	Mitered 2"	SFA	n.a.
	S7111041	389 / 567	20" x 94"	Visible	DOUBLE Tow Hook	Blank	Mitered 2"	SFA	n.a.
2	S7111042	389 / 567	18" x 94"	Visible	DOUBLE Tow Hook	24 x 3/4"	Mitered 2"	SFA	n.a.
	S7111043	389 / 567	18" x 94"	Visible	DOUBLE Tow Hook	15 x 2" Round	Mitered 2"	SFA	n.a.
	S7111044	389 / 567	18" x 94"	Visible	DOUBLE Tow Hook	10 x Oval	Mitered 2"	SFA	n.a.
	S7111045	389 / 567	18" x 94"	Visible	DOUBLE Tow Hook	Blank	Mitered 2"	SFA	n.a.
3	S7111046	389 / 567	20" x 94"	Visible	DOUBLE Tow Hook	24 x 3/4"	Boxed & Side Radius	SFA	n.a.
	S7111047	389 / 567	20" x 94"	Visible	DOUBLE Tow Hook	15 x 2" Round	Boxed & Side Radius	SFA	n.a.
	S7111048	389 / 567	20" x 94"	Visible	DOUBLE Tow Hook	10 x Oval	Boxed & Side Radius	SFA	n.a.
	S7111049	389 / 567	20" x 94"	Visible	DOUBLE Tow Hook	Blank	Boxed & Side Radius	SFA	n.a.
	S7111050	389 / 567	18" x 94"	Visible	DOUBLE Tow Hook	24 x 3/4"	Boxed & Side Radius	SFA	n.a.
	S7111051	389 / 567	18" x 94"	Visible	DOUBLE Tow Hook	15 x 2" Round	Boxed & Side Radius	SFA	n.a.

PETERBILT BUMPERS



PETERBILT 389 2012 & UP / 567 SFA 2016 & UP

FRONT BUMPERS									
	PART #	MODEL	DIMENSIONS	BOLT PATTERN HOLES	TOW HOOK HOLES	LED	TYPE	SFA/SBA	OTHER
	S7111052	389 / 567	18" x 94"	Visible	DOUBLE Tow Hook	10 x Oval	Boxed & Side Radius	SFA	n.a.
	S7111053	389 / 567	18" x 94"	Visible	DOUBLE Tow Hook	Blank	Boxed & Side Radius	SFA	n.a.
	S7111054	389 / 567	20" x 94"	Visible	DOUBLE Tow Hook	24 x 3/4"	Boxed	SFA	n.a.
1	S7111055	389 / 567	20" x 94"	Visible	DOUBLE Tow Hook	15 x 2" Round	Boxed	SFA	n.a.
	S7111056	389 / 567	20" x 94"	Visible	DOUBLE Tow Hook	10 x Oval	Boxed	SFA	n.a.
2	S7111057	389 / 567	20" x 94"	Visible	DOUBLE Tow Hook	Blank	Boxed	SFA	n.a.
	S7111058	389 / 567	18" x 94"	Visible	DOUBLE Tow Hook	24 x 3/4"	Boxed	SFA	n.a.
	S7111059	389 / 567	18" x 94"	Visible	DOUBLE Tow Hook	15 x 2" Round	Boxed	SFA	n.a.
	S7111060	389 / 567	18" x 94"	Visible	DOUBLE Tow Hook	10 x Oval	Boxed	SFA	n.a.
3	S7111061	389 / 567	18" x 94"	Visible	DOUBLE Tow Hook	Blank	Boxed	SFA	n.a.
	S7111064	389 / 567	20" x 94"	Visible	NO Tow Hook	24 x 3/4"	Boxed	SFA	n.a.
	S7111066	389 / 567	18" x 94"	Visible	SINGLE Tow Hook	Blank	Boxed	SFA	Central opening (12.5" x 5.5")

PETERBILT 348 ALL YEARS

FRONT BUMPERS									
	PART #	MODEL	DIMENSIONS	BOLT PATTERN HOLES	TOW HOOK HOLES	LED	TYPE	SFA/SBA	OTHER
4	S7111065	348	16" x 96"	NOT Visible	DOUBLE Tow Hook	Blank	Boxed & Side Radius	SBA	n.a.

PETERBILT 379 1967-1987

FRONT BUMPERS									
	PART #	MODEL	DIMENSIONS	BOLT PATTERN HOLES	TOW HOOK HOLES	LED	TYPE	SFA/SBA	OTHER
5	S7111068	379	20" x 94"	Visible	SINGLE Tow Hook	Blank	Mitered 4"	SFA	Central opening (7.88" x 5.12")
	S7111071	379	20" x 94"	Visible	SINGLE Tow Hook	Blank	Boxed	SFA	Central opening (7.88" x 5.12")

KENWORTH BUMPERS

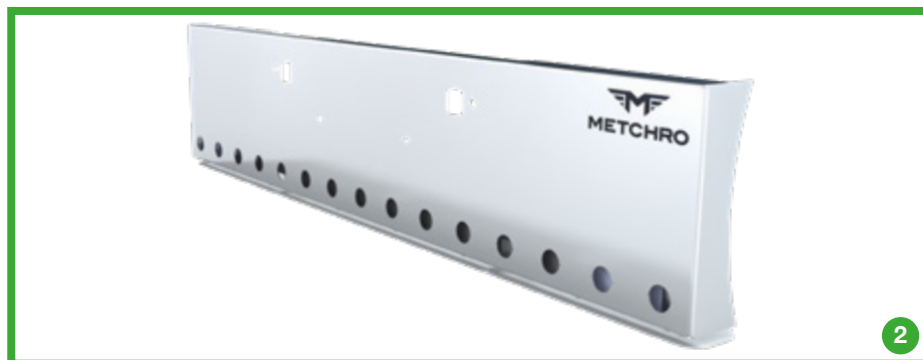


FRONT BUMPERS									
	PART #	MODEL	DIMENSIONS	BOLT PATTERN HOLES	TOW HOOK HOLES	LED	TYPE	SFA/SBA	OTHER
	S7111069	W990	20" x 94"	NOT Visible	DOUBLE Tow Hook	Blank	Mitered 4" Boxed radius	SFA	n.a.
	S7111070	W990	18" x 94"	Visible	DOUBLE Tow Hook	24 x 3/4"	Mitered 4" & Taper Ends (16")	SFA	n.a.
1	S7111030	W990	20" x 94"	Visible	DOUBLE Tow Hook	24 x 3/4"	Mitered 2" Boxed radius	SFA	n.a.
	S7111031	W990	20" x 94"	Visible	DOUBLE Tow Hook	Blank	Mitered 2" Boxed radius	SFA	n.a.
	S7111032	W990	20" x 94"	Visible	DOUBLE Tow Hook	15 x 2" Round	Mitered 2" Boxed radius	SFA	n.a.
	S7111033	W990	20" x 94"	Visible	DOUBLE Tow Hook	10 x Oval	Mitered 2" Boxed radius	SFA	n.a.
	S7111034	W990	18" x 94"	Visible	DOUBLE Tow Hook	24 x 3/4"	Mitered 2" Boxed radius	SFA	n.a.
	S7111035	W990	18" x 94"	Visible	DOUBLE Tow Hook	Blank	Mitered 2" Boxed radius	SFA	n.a.
	S7111036	W990	18" x 94"	Visible	DOUBLE Tow Hook	15 x 2" Round	Mitered 2" Boxed radius	SFA	n.a.
	S7111037	W990	18" x 94"	Visible	DOUBLE Tow Hook	10 x Oval	Mitered 2" Boxed radius	SFA	n.a.
	S7111072	W990	20" x 94"	NOT Visible	DOUBLE Tow Hook	Blank	Mitered 4"	SFA	n.a.
	S7111038	W990	20" x 94"	Visible	DOUBLE Tow Hook	24 x 3/4"	Mitered 2"	SFA	n.a.
	S7111039	W990	20" x 94"	Visible	DOUBLE Tow Hook	15 x 2" Round	Mitered 2"	SFA	n.a.
	S7111040	W990	20" x 94"	Visible	DOUBLE Tow Hook	10 x Oval	Mitered 2"	SFA	n.a.
	S7111041	W990	20" x 94"	Visible	DOUBLE Tow Hook	Blank	Mitered 2"	SFA	n.a.
2	S7111042	W990	18" x 94"	Visible	DOUBLE Tow Hook	24 x 3/4"	Mitered 2"	SFA	n.a.
	S7111043	W990	18" x 94"	Visible	DOUBLE Tow Hook	15 x 2" Round	Mitered 2"	SFA	n.a.
	S7111044	W990	18" x 94"	Visible	DOUBLE Tow Hook	10 x Oval	Mitered 2"	SFA	n.a.
	S7111045	W990	18" x 94"	Visible	DOUBLE Tow Hook	Blank	Mitered 2"	SFA	n.a.
	S7111046	W990	20" x 94"	Visible	DOUBLE Tow Hook	24 x 3/4"	Boxed & Side Radius	SFA	n.a.
	S7111047	W990	20" x 94"	Visible	DOUBLE Tow Hook	15 x 2" Round	Boxed & Side Radius	SFA	n.a.
	S7111048	W990	20" x 94"	Visible	DOUBLE Tow Hook	10 x Oval	Boxed & Side Radius	SFA	n.a.
	S7111049	W990	20" x 94"	Visible	DOUBLE Tow Hook	Blank	Boxed & Side Radius	SFA	n.a.
	S7111050	W990	18" x 94"	Visible	DOUBLE Tow Hook	24 x 3/4"	Boxed & Side Radius	SFA	n.a.
	S7111051	W990	18" x 94"	Visible	DOUBLE Tow Hook	15 x 2" Round	Boxed & Side Radius	SFA	n.a.
	S7111052	W990	18" x 94"	Visible	DOUBLE Tow Hook	10 x Oval	Boxed & Side Radius	SFA	n.a.
	S7111053	W990	18" x 94"	Visible	DOUBLE Tow Hook	Blank	Boxed & Side Radius	SFA	n.a.

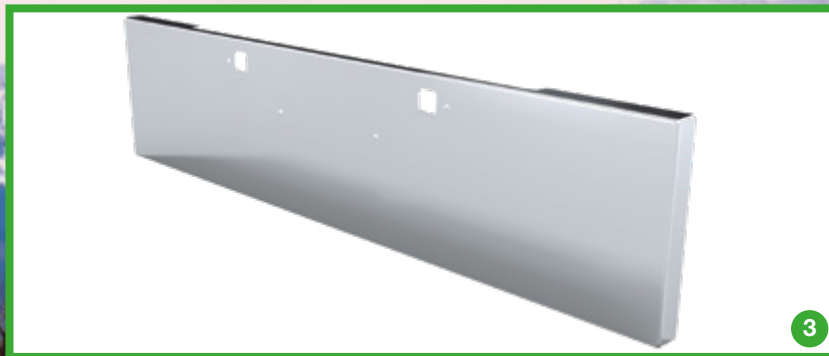
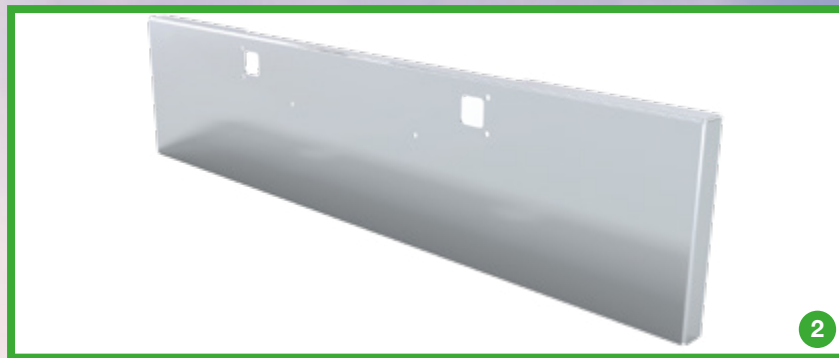
KENWORTH BUMPERS



FRONT BUMPERS									
PART #	MODEL	DIMENSIONS	BOLT PATTERN HOLES	TOW HOOK HOLES	LED	TYPE	SFA/SBA	OTHER	
S7111054	W990	20" x 94"	Visible	DOUBLE Tow Hook	24 x 3/4"	Boxed	SFA	n.a.	
S7111055	W990	20" x 94"	Visible	DOUBLE Tow Hook	15 x 2" Round	Boxed	SFA	n.a.	
1 S7111056	W990	20" x 94"	Visible	DOUBLE Tow Hook	10 x Oval	Boxed	SFA	n.a.	
S7111057	W990	20" x 94"	Visible	DOUBLE Tow Hook	Blank	Boxed	SFA	n.a.	
S7111058	W990	18" x 94"	Visible	DOUBLE Tow Hook	24 x 3/4"	Boxed	SFA	n.a.	
S7111059	W990	18" x 94"	Visible	DOUBLE Tow Hook	15 x 2" Round	Boxed	SFA	n.a.	
S7111060	W990	18" x 94"	Visible	DOUBLE Tow Hook	10 x Oval	Boxed	SFA	n.a.	
2 S7111061	W990	18" x 94"	Visible	DOUBLE Tow Hook	Blank	Boxed	SFA	n.a.	
S7111062	W990	20" x 94"	Visible	NO Tow Hook	24 x 3/4"	Mitered 2" & radius	SFA	n.a.	
S7111063	W990	20" x 94"	Visible	NO Tow Hook	Blank	Mitered 2" & radius	SFA	n.a.	
S7111064	W990	20" x 94"	Visible	NO Tow Hook	24 x 3/4"	Boxed	SFA	n.a.	
S7111066	W990	18" x 94"	Visible	SINGLE Tow Hook	Blank	Boxed	SFA	Central opening (12.5" x 5.5")	
S7211505	W990	20" x 102"	Visible	DOUBLE Tow Hook	26 x 3/4"	Mitered 2" & Boxed Radius	SFA	n.a.	
S7211016	W990	18" x 94"	Visible	DOUBLE Tow Hook	Blank	Boxed	SFA	Foot Hole (7" x 4") Fog Lights	



KENWORTH BUMPERS



KENWORTH W900B 2011 & UP

FRONT BUMPERS

PART #	MODEL	DIMENSIONS	BOLT PATTERN HOLES	TOW HOOK HOLES	LED	TYPE	SFA/SBA	OTHER
S7211027	W900B	18" x 94"	Visible	DOUBLE Tow Hook	24 x 3/4"	Mitered 4"	SFA	n.a.

KENWORTH W900L 1982 & UP

FRONT BUMPERS									
PART #	MODEL	DIMENSIONS	BOLT PATTERN HOLES	TOW HOOK HOLES	LED	TYPE	SFA/SBA	OTHER	
S7211519	W900L	11" x 96"	Visible	DOUBLE Tow Hook	Blank	Mitered	SFA	n.a.	
S7211024	W900L	18" x 94"	Visible	DOUBLE Tow Hook	Blank	Mitered 4"	SFA	n.a.	
S7211023	W900L	20" x 94"	Visible	DOUBLE Tow Hook	Blank	Mitered 4"	SFA	n.a.	
S7211010	W900L	20" x 94"	Visible	DOUBLE Tow Hook	2 x Melon	Mitered 4"	SFA	n.a.	
S7211026	W900L	20" x 94"	Visible	DOUBLE Tow Hook	Blank + 2x holes watermelon LED Lights	Mitered 4"	SFA	n.a.	
S7211040	W900L	20" x 94"	NOT Visible	DOUBLE Tow Hook	Blank	Mitered 4"	SFA	n.a.	
S7211022	W900L	22" x 94"	Visible	DOUBLE Tow Hook	Blank	Mitered 4"	SFA	n.a.	
S7211516	W900L	11" x 96"	Visible	DOUBLE Tow Hook	Blank	Boxed	SFA	n.a.	
S7211019	W900L	18" x 94"	Visible	DOUBLE Tow Hook	Blank	Boxed	SFA	n.a.	
1 S7211009	W900L	20" x 94"	NOT Visible	DOUBLE Tow Hook	22 x 3/4"	Boxed	SFA	n.a.	
S7211018	W900L	20" x 94"	Visible	DOUBLE Tow Hook	Blank	Boxed	SFA	n.a.	
2 S7211013	W900L	22" x 94"	Visible	DOUBLE Tow Hook	Blank	Boxed	SFA	n.a.	

KENWORTH W900B 1982 & UP

FRONT BUMPERS									
PART #	MODEL	DIMENSIONS	BOLT PATTERN HOLES	TOW HOOK HOLES	LED	TYPE	SFA/SBA	OTHER	
S7211027	W900B	18" x 94"	Visible	DOUBLE Tow Hook	Blank	Mitered 4"	SFA	n.a.	
S7211017	W900B	20" x 94"	Visible	DOUBLE Tow Hook	Blank	Mitered 4"	SFA	n.a.	
S7211038	W900B	20" x 94"	Visible	DOUBLE Tow Hook	Blank	Mitered 4"	SFA	Foot Hole	
S7211025	W900B	22" x 94"	Visible	DOUBLE Tow Hook	Blank	Mitered 4"	SFA	n.a.	
S7211515	W900B	11" x 93"	Visible	SINGLE Tow Hook	Blank	Boxed	SFA	Central Opening (11.8" x 7.5")	
S7211021	W900B	18" x 94"	Visible	DOUBLE Tow Hook	Blank	Boxed	SFA	n.a.	
S7211020	W900B	20" x 94"	Visible	DOUBLE Tow Hook	Blank	Boxed	SFA	n.a.	
3 S7211015	W900B	22" x 94"	Visible	DOUBLE Tow Hook	Blank	Boxed	SFA	n.a.	

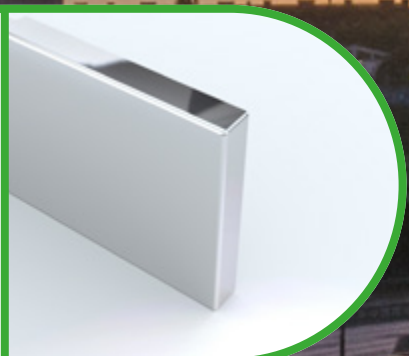
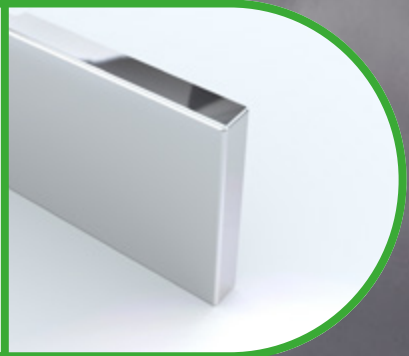
KENWORTH BUMPERS



FRONT BUMPERS									
	PART #	MODEL	DIMENSIONS	BOLT PATTERN HOLES	TOW HOOK HOLES	LED	TYPE	SFA/SBA	OTHER
1	S7211501	T800 (2004+) T880 (2012+)	14" x 90"	Visible	DOUBLE Tow Hook	Blank	Open Square	Break Back	Central opening Fog Lights
2	S7211502	T800 (2004+) T880 (2012+)	14" x 90"	Visible	DOUBLE Tow Hook	Blank	Open Tapper	Break Back	Central opening
	S7211503	T800 (-2003)	14" x 90"	Visible	DOUBLE Tow Hook	Blank	Open Square	Break Back	Central opening Fog Lights
	S7211504	T800 (-2003)	14" x 90"	Visible	DOUBLE Tow Hook	Blank	Open Tapper	Break Back	Central opening
	S7211039	T800 (-2003)	18" x 90"	Visible	DOUBLE Tow Hook	Blank	Open Tapper	Break Back	Central opening
3	S7211506	T880 (2012+)	18" x 102"	Visible	DOUBLE Tow Hook	Blank	Open	SBA	Central Opening Fog Lights 23" Side Hood Deep
	S7211507	T800 (2004+) T880 (2012+)	18" x 96"	Visible	DOUBLE Tow Hook	Blank	Open	SBA	Central Opening Fog Lights 23" Side Hood Deep
	S7211510	T800 (2004+) T880 (2012+)	18" x 96"	Visible	DOUBLE Tow Hook	Blank	Open	SBA	Central Opening 23" Side Hood Deep
	S7211508	T800 (-2003)	20" x 90"	Visible	DOUBLE Tow Hook	Blank	Open Square	Break Back	Central Opening
4	S7211509	T800 (2004+) T880 (2012+)	20" x 90"	NOT Visible	DOUBLE Tow Hook	22 x 3/4"	Open Square	Break Back	Fixation Plate required
	S7211514	T800 (2004+) T880 (2012+)	20" x 90"	Visible	DOUBLE Tow Hook	Blank	Open Square	Break Back	Central Opening
	S7211517	T800 (2004+) T880 (2012+)	18" x 97" 3 PCS	Visible	DOUBLE Tow Hook	Blank	Open Square	Break Back	Side Radius
	S7211518	T800 (-2003)	14" x 90"	Visible	DOUBLE Tow Hook	Blank	Open Tapper	Break Back	Central Opening

KENWORTH T660

FRONT BUMPERS									
	PART #	MODEL	DIMENSIONS	BOLT PATTERN HOLES	TOW HOOK HOLES	LED	TYPE	SFA/SBA	OTHER
	S7211011	T660	"18" x 92.3" 3 PCS "	NOT Visible	NO Tow Hook	Blank	Open	SBA	n.a.
	S7211012	T660	"18" x 92.3" 3 PCS "	NOT Visible	DOUBLE Tow Hook	27 x 3/4"	Open	SBA	Licence Plate Recessed



FREIGHTLINER BUMPERS

FREIGHTLINER CLASSIC

FRONT BUMPERS									
	PART #	MODEL	DIMENSIONS	BOLT PATTERN HOLES	TOW HOOK HOLES	LED	TYPE	SFA/SBA	OTHER
1	S7311128	Classic (2007 +)	20" x 94"	Visible	DOUBLE Tow Hook	Blank	Boxed Taper	SFA	Licence Plate Recessed
		Classic (1992-2010)	22" x 94"	Visible	DOUBLE Tow Hook	Blank	Boxed Taper	SFA	n.a.

WESTERN STAR BUMPERS

WESTERN STAR 49X 2021 & UP

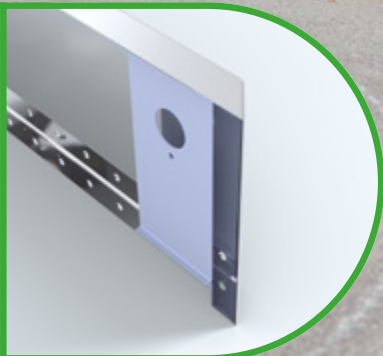
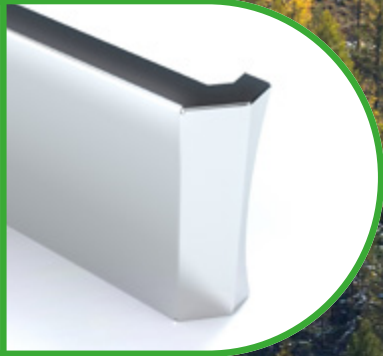
FRONT BUMPERS									
	PART #	MODEL	DIMENSIONS	BOLT PATTERN HOLES	TOW HOOK HOLES	LED	TYPE	SFA/SBA	OTHER
2	S7511002	49X	20" x 96"	Visible	DOUBLE Tow Hook	Blank	Mitered 4" & Radius	SFA	Fog Lights Licence Plate Recessed
	S7511003	49X	20" x 96"	Visible	DOUBLE Tow Hook	Blank	Mitered 4" & Radius	SFA	Fog Lights
	S7511004	49X	20" x 96"	Visible	DOUBLE Tow Hook	17 x 2" Round	Mitered 4" & Radius	SFA	Fog Lights Licence Plate Recessed
3	S7511005	49X	20" x 96"	NOT Visible	DOUBLE Tow Hook	24 x 3/4"	Boxed	SFA	Fixation Plate required
	S7511007	49X	20" x 96"	Visible	DOUBLE Tow Hook	25 x 3/4"	Mitered 4" & Radius	SFA	Fog Lights

VOLVO BUMPER

VOLVO VNL2000 1998-2003

FRONT BUMPERS									
	PART #	MODEL	DIMENSIONS	BOLT PATTERN HOLES	TOW HOOK HOLES	LED	TYPE	SFA/SBA	OTHER
4	S7711004	VNL2000 (98-2003)	20" x 96"	Visible	DOUBLE Tow Hook	10 x 3/4"	Open Square	Break Back	Side Radius Fog Lights 28" Side Hood Deep

UNIVERSAL BUMPERS



FRONT BUMPERS									
PART #	MODEL	DIMENSIONS	BOLT PATTERN HOLES	TOW HOOK HOLES	LED	TYPE	SFA/SBA	OTHER	
S7911156	Many	18" x 94"	NOT Visible	NO Tow Hook	Blank	Mitered 2" Boxed radius	SFA	n.a.	
S7911157	Many	20" x 94"	NOT Visible	NO Tow Hook	Blank	Mitered 2" Boxed radius	SFA	n.a.	
1 S7911167	Many	20" x 94"	NOT Visible	NO Tow Hook	Blank	Mitered 4" & Side Radius	SFA	n.a.	
S7911183	Many	22" x 94"	NOT Visible	NO Tow Hook	24 x 3/4"	Mitered 4" & Side Radius	SFA	n.a.	
S7911163	Many	20" x 102"	NOT Visible	NO Tow Hook	Blank	Mitered 2" & Side Radius	SFA	n.a.	
2 S7911169	Many	20" x 102"	NOT Visible	NO Tow Hook	Blank	Mitered 2" & Side Radius	SFA	Licence Plate Recessed	
S7911158	Many	18" x 94"	NOT Visible	NO Tow Hook	Blank	Mitered 4"	SFA	n.a.	
S7911175	Many	18" x 94"	NOT Visible	NO Tow Hook	Blank	Mitered 4"	SFA	Licence Plate Recessed	
S7911159	Many	20" x 94"	NOT Visible	NO Tow Hook	Blank	Mitered 4"	SFA	n.a.	
S7911166	Many	20" x 94"	NOT Visible	NO Tow Hook	Blank	Mitered 4"	SFA	n.a.	
S7911171	Many	20" x 94"	NOT Visible	NO Tow Hook	22 x 3/4"	Mitered 4"	SFA	n.a.	
S7911181	Many	20" x 94"	NOT Visible	NO Tow Hook	Blank	Mitered 4"	SFA	Licence Plate Recessed	

UNIVERSAL FRONT BUMPER SUPPORT

WIRE PROTECTIVE COVERS		
PART #	DESCRIPTION	FOR BUMPER #
C7911182	22" High Universal Front Bumper Support / Boltless / Adapted for LED Lights Bumper (S7911183)	S7911183



UNIVERSAL BUMPERS



2



3



UNIVERSAL BUMPERS

FRONT BUMPERS									
	PART #	MODEL	DIMENSIONS	BOLT PATTERN HOLES	TOW HOOK HOLES	LED	TYPE	SFA/SBA	OTHER
1	S7911162	Many	18" x 94"	NOT Visible	NO Tow Hook	Blank	Boxed	SFA	n.a.
2	S7911174	Many	18" x 94"	NOT Visible	NO Tow Hook	Blank	Boxed	SFA	Licence Plate Recessed
	S7911161	Many	20" x 94"	NOT Visible	NO Tow Hook	Blank	Boxed	SFA	n.a.
	S7911164	Many	20" x 94"	NOT Visible	NO Tow Hook	Blank	Boxed	SFA	Tapper Ends (17")
	S7911180	Many	20" x 94"	NOT Visible	NO Tow Hook	Blank	Boxed	SFA	Licence Plate Recessed
	S7911165	Many	21" x 94"	NOT Visible	NO Tow Hook	Blank	Boxed	SFA	Licence Plate Recessed
	S7911172	Many	22" x 94"	NOT Visible	NO Tow Hook	Blank	Boxed	SFA	n.a.
	S7911160	Many	18" x 94"	NOT Visible	NO Tow Hook	Blank	Boxed & Side Radius	SFA	n.a.
3	S7911173	Many	22" x 94"	NOT Visible	NO Tow Hook	Blank	Boxed & Side Radius	SFA	n.a.



BUMPER ACCESSORIES

UNIVERSAL LED LIGHTS KITS

UNIVERSAL LED LIGHTS KITS FOR BUMPERS				
PART #	SHAPE	LIGHT COLOR	LENSE COLOR	QTY / SIZE
KMLEDB2A-BP26	Round	Amber	Amber	26 x 3/4"
KMLEDB2CA-BP26	Round	Amber	Clear	26 x 3/4"
KMLED2A-BP15	Round	Amber	Amber	15 x 2" Round
KMLED2CA-BP15	Round	Amber	Clear	15 x 2" Round
KMLEDGEN1A-BP10	Oval with bezels	Amber	Amber	10 x Oval
KMLEDGEN1CA-BP10	Oval with bezels	Amber	Clear	10 x Oval
KMLEDFGA-BP10	Oval flatline	Amber	Amber	10 x Oval
KMLEDFGCA-BP10	Oval flatline	Amber	Clear	10 x Oval

3/4" BULLSEYE LIGHTS LEGEND



AMBER LIGHT



CLEAR AMBER LIGHT

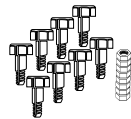
BOLTS UNIVERSAL KITS LEGEND



7913001
UNIVERSAL STAINLESS STEEL BOLTS KIT FOR BUMPER (4X)



7913002
UNIVERSAL STAINLESS STEEL BOLTS KIT FOR BUMPER (6X)



7913003
UNIVERSAL STAINLESS STEEL BOLTS KIT FOR BUMPER (8X)

2" ROUND LIGHTS LEGEND



AMBER LIGHT+BEZEL



CLEAR AMBER LIGHT

OVAL LIGHTS LEGEND



AMBER LIGHT



CLEAR AMBER LIGHT

BRACKETS AND HARDWARE

BRACKETS AND HARDWARE		
PART #	COMPATIBILITY	PROFILE / DESCRIPTION
KBP7111030BH	Peterbilt Kenworth	Bracket kit for 20" high bumper
KBP7111034BH	Peterbilt Kenworth	Bracket kit for 18" high bumper
KBP7211505BH	Kenworth	Bracket kit for 20" high bumper s7211505
S7211041	Kenworth	20" High Bumper Mount Plate for W900B SFA Short Hood 2011 & Up – W900L SFA Long Hood 1982 & Up
KBP7311128BH	Freightliner	Bracket kit for freightliner bumper s7311128
S7513001	Western Star	Plates to cover tow hook holes (3-1/4 x 3-1/4) / Western Star 49X SFA 2021 & up
K7511003FL	Western Star	Hardware kit if fog light holes - western star bumpers only
K7511004BB-1	Western Star	Bolts kit for Western Star bumpers / s7511004 - 007
S7911178	Universal	Step for bumper (10" x 5") / bolted under the bumper
S7911176	Universal	Licence Plate Support for Bumper

WIRE PROTECTIVE COVERS

WIRE PROTECTIVE COVERS		
PART #	PROFILE / DESCRIPTION	FOR BUMPER #
KBP7111034CF	Wire protective cover for 18" bumpers	S7111034 - 036 - 037
KBP7111030CF	Wire protective cover for 20" bumpers	S7111030 - 032 - 033
KBP7111038CF	Wire protective cover for 18" and 20" bumpers	S7111038 - 039 - 040 -042 - 043 - 044
KBP7111046CF	Wire protective cover for 18" and 20" bumpers	S7111046 - 047 - 048 - 050 - 051 - 052 - 054 - 056 - 058 - 059 - 060
KBP7211505CF	Wire protective cover for bumper	S7211505
K7511004CF	Wire protective cover for Western Star bumper	For Western Star Bumpers rith side radius
KBP7911171CF	Wire protective cover for bumper	S7911171

UNIVERSAL FIXATION PLATES

UNIVERSAL BUMPER SUPPORT PLATES	
PART #	PROFILE / DESCRIPTION
C7511006	Bumper fixation plate for 20" front bumper for Western Star
C7911154	Bumper fixation plate for 20" front bumper (except Western Star)
C7911155	Bumper fixation plate for 18" front bumper (except Western Star)
C7911153	Bumper fixation plate for 22" front bumper (except Western Star)
C7911168	Bumper fixation plate for 20" front bumper with central recess (except Western Star)



EASY TO ORDER or CONTACT US for MORE DETAILS
metchro.com | Toll-free: 888 932-3333